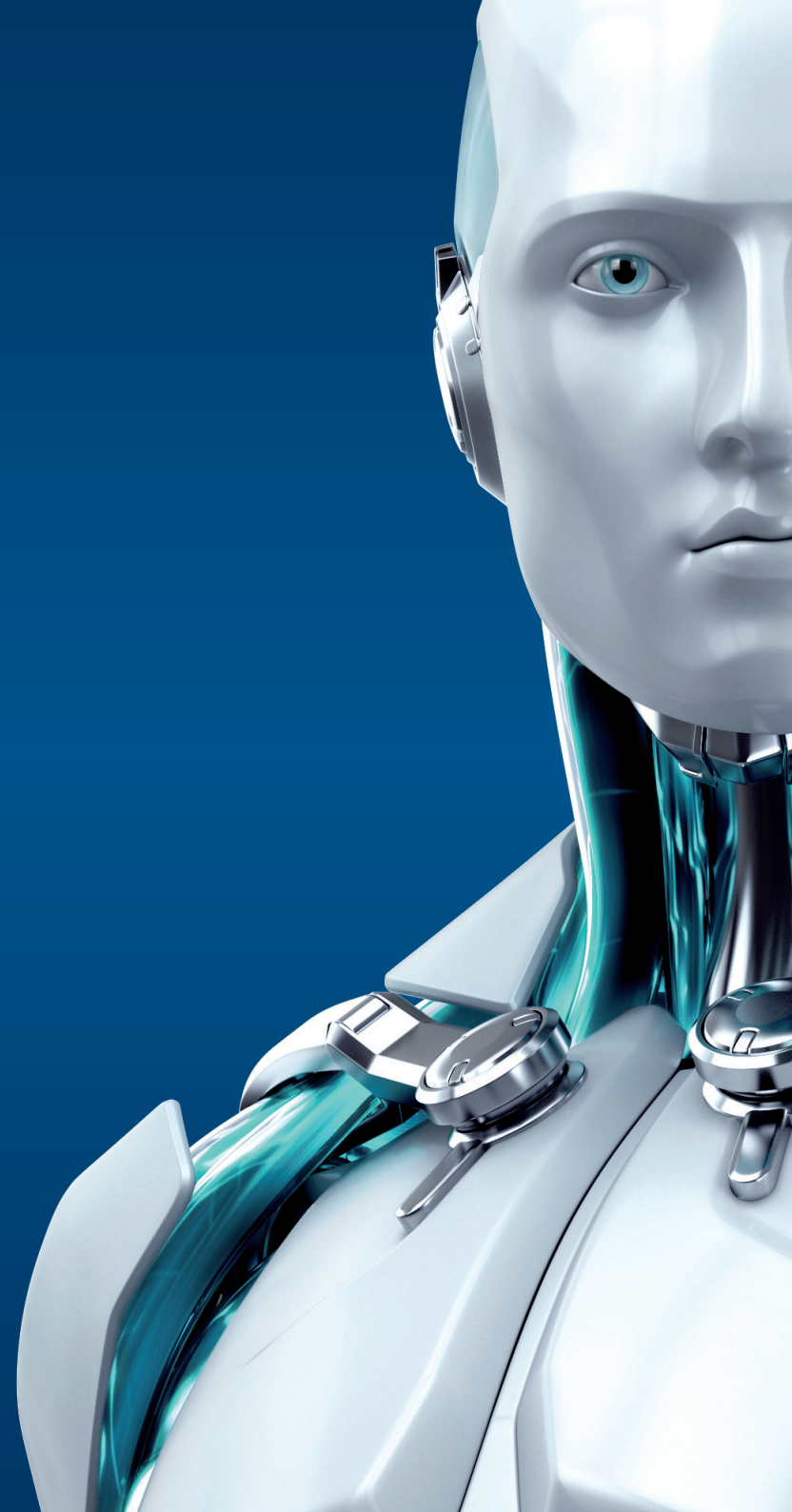




# Securing virtualized environments

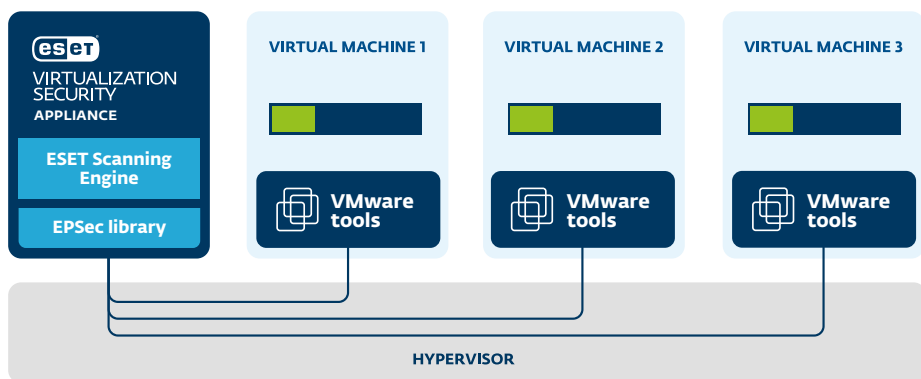


ENJOY SAFER TECHNOLOGY™



# VIRTUALIZATION SECURITY

ESET Virtualization Security supports both - NSX and vShield platforms. Automatic deployment of ESET Virtualization Security appliances to hosts newly connected to NSX Manager allows instant protection of newly added virtual hosts, and virtualized workloads.



In addition, the solution natively supports VMware NSX automation, vMotion and is compatible with ESET Remote Administrator 6, ESET's web-based console, allowing direct drill-down capability to virtual machines for rapid task execution and complete endpoint security management.

## Easy to deploy

Once ESET Remote Administrator – which comes as a virtual appliance too – is installed, ESET Virtualization Security appliances can be deployed on multiple hosts at once.

## Superior performance

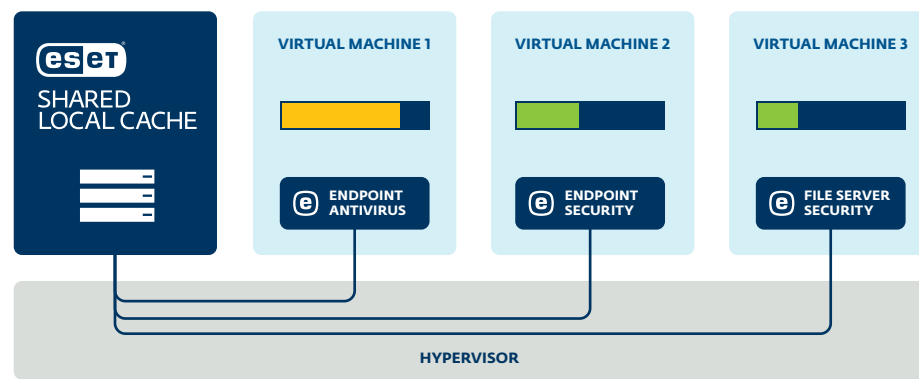
VM infrastructure is about optimizing resources and performance, and ESET's scanning engine exactly meets these requirements. It is well known for its low system demands and high speed, thus leaving more resources for other applications and processes.

## Native support for NSX automation

ESET Virtualization Security natively supports micro-segmentation and automatic task execution that automatically moves infected machines to a different micro-segment, to prevent the spread of malware, and executes scanning. Once a machine is proven clean, it is returned to its original place.

# SHARED LOCAL CACHE

With ESET Shared Local Cache and the protection of an agent-based ESET security product, you get the same full set of tools and security features that you would have in a physical environment, plus significantly boosted scanning speed.



**Endpoint Antivirus:** ESET Endpoint Antivirus 6 for Windows, ESET Endpoint Antivirus 6 for OS X

**Endpoint Security:** ESET Endpoint Security 6 for Windows, ESET Endpoint Security 6 for OS X

**File Server Security:** ESET File Security 6 for Microsoft Windows Server

**Mail Server Security:** ESET Mail Security 6 for Microsoft Exchange Server

## No duplicate scanning

Virtual machines commonly share the same base image, which results in 70-80% duplication of files between machines. ESET Shared Local Cache saves metadata about clean files from previously scanned machines within the same hypervisor. This means that files already scanned on one virtual machine are not repeatedly scanned on other virtual machines within the same virtual environment, resulting in a significant scanning boost.

## Multi-layered protection

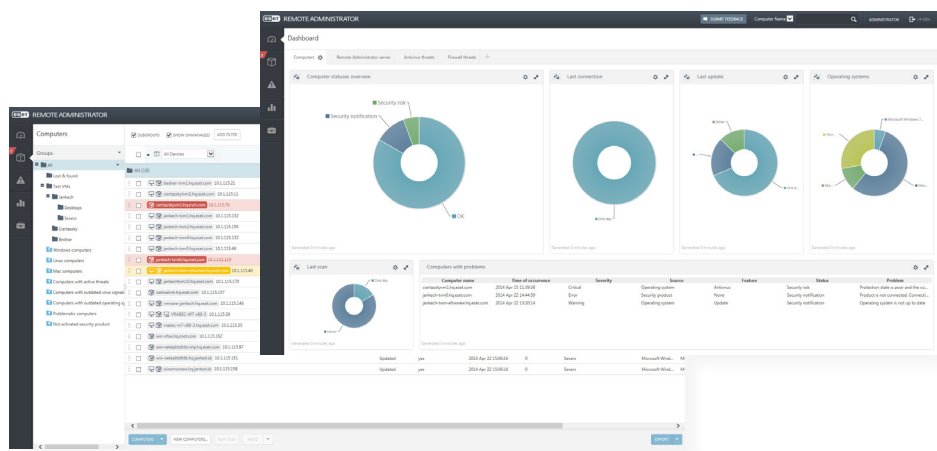
ESET Shared Local Cache couple with an agent-based ESET solution delivers comprehensive IT security for your business via multiple layers of protection – including our proven ESET NOD32® detection technology and fully adjustable scanning options.

# eset REMOTE ADMINISTRATOR

Physical and virtual machines are managed from a single point, allowing role-based management and a “look & see” web-console dashboard with drill-down capabilities that can be used to execute any action that is required.

In addition, ESET Remote Administrator can be installed on Windows as well as Linux servers, and also comes as a Virtual Appliance.

The ESET Remote Administrator virtual appliance simplifies deployment of ESET Remote Administrator and is faster than using the all-in-one installer or component installation packages.



It supports native/bare-metal hypervisors (VMware vSphere/ESXi, Microsoft Hyper-V) as well as hosted hypervisors that usually run on desktop operating systems (VMware Workstation, VMware Player, Oracle VirtualBox).

The virtual appliance comes as an OVA (Open Virtualization Appliance) file and contains multiple ESET Remote Administrator appliance types – server component including rogue detector, proxy component and mobile device management component.

# eset SERVER SOLUTIONS READY FOR VIRTUAL ENVIRONMENT

## Process Exclusions

The admin can define processes which are ignored by the real-time protection module – all file operations that can be attributed to these privileged processes are considered to be safe. This is especially useful for processes that often interfere with real-time protection, like backup or live virtual machine migration. Excluded process can access even unsafe files or objects without triggering an alert.

## Snapshot Independence

ESET updates and program modules can be stored outside of the default location – so are not affected by reverting to an earlier snapshot of the virtual machine. As a result, the updates and modules don't have to be downloaded every time a virtual machine is reverted to an earlier snapshot and the reverted machine can utilize untouched updates and avoid large downloads, resulting in faster snapshot recovery times.

## Native Clustering Support

Allows you to configure the solution to automatically replicate settings when installed in a cluster environment and manage them as one, eliminating the need to replicate changes in configuration manually to other nodes in the cluster.

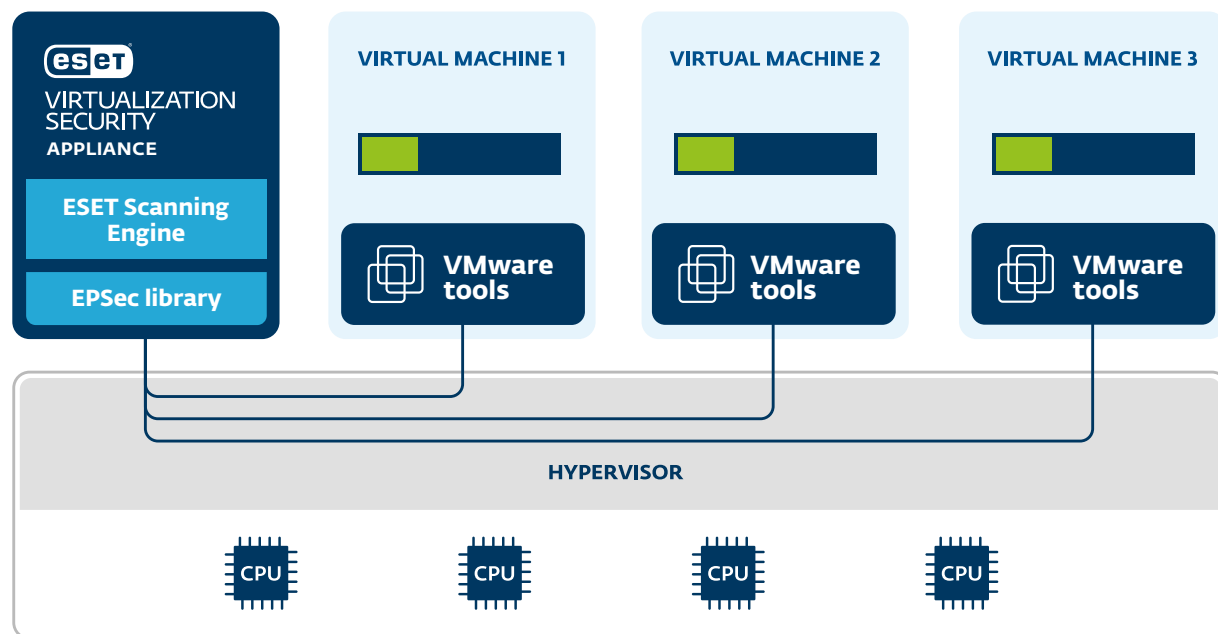
## Hyper-V Storage Scan

Scans Microsoft Windows® servers with enabled Hyper-V role for malware, without the need to have another instance of an antivirus product in place. Saves time by scanning the hard-drive contents with no pre-arrangements or system down-time and provides separate reports based on the scan results. For enhanced performance, lower memory consumption and lower CPU usage, scans can be carried out on virtual machines while they are turned off.

To see which features are applicable to which products, please visit [eset.com](http://eset.com).

## ESET Virtualization Security for VMware licensing

You can choose from 3 distinct types of licensing – per virtual machine, per host, or per processor in a way that matches your needs, the network infrastructure, and the way you use your virtual environment.



### Per virtual machine (VM) licensing

- 1 VM is counted as 1 physical endpoint and consumes one seat from the license
- Ideal solution if running fewer than 50 VMs on the host
- Best-suited solution for companies in the process of migrating from physical to virtual environments - migrate the ESET license from physical endpoints to virtual ones

### Per host licensing

- Flat fee: one host = one price
- Unlimited number of VMs running on the host covered
- Most suitable if running more than 50 VMs on the host

### Per processor licensing

- Flat fee: one physical processor = one price
- Price for 2 processors = approximately price for 1 host
- Best-suited option if running more than 25 VMs per processor

## ESET Shared Local Cache licensing

ESET Shared Local Cache comes free with the license of any ESET security product(s), at least one of which must be present on each virtual machine.