

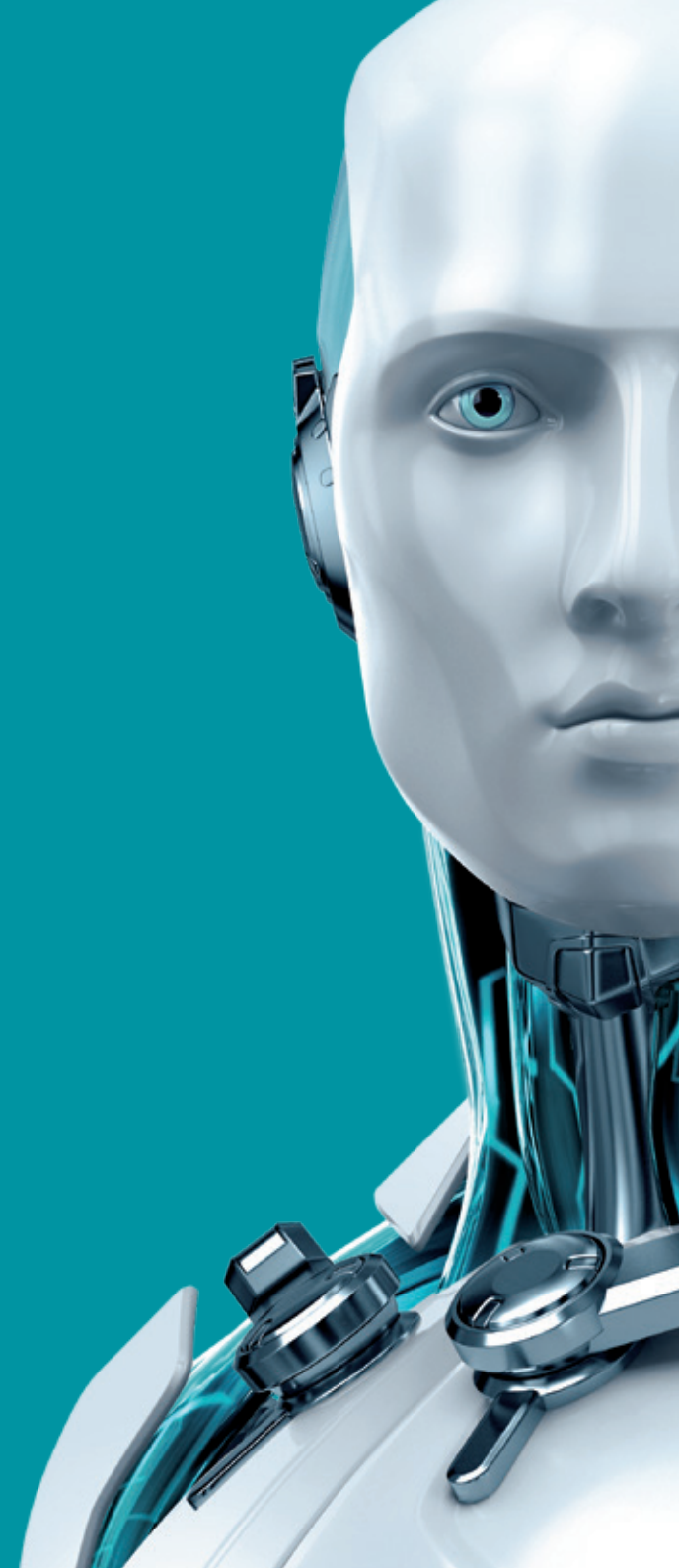


PARENTAL CONTROL

FOR ANDROID



ENJOY SAFER TECHNOLOGY™





PARENTAL CONTROL FOR ANDROID

ESET Parental Control for Android protects children who are using smartphones and tablets, and does so in a child-friendly way. It shields them from inappropriate or offensive online content by completely blocking access to select website categories. A more liberal mode makes it possible to just monitor the child's website visits, or following a request, to unblock an app or website that was previously banned. In addition, a useful tool with kids – parents can keep control over the length of time spent using apps or gaming, or block inappropriate apps altogether based on the child's maturity level. In an emergency, a parent can locate the child based on his/her device that's connected to the Internet.

Available in free and premium version.

Protect your kids on the web

Rely on the features that help you protect children from inappropriate online content.

List of most visited domains	Shows the top visited websites for the last 7 days.
Web Guard <small>AVAILABLE IN PREMIUM</small>	The app automatically blocks predefined website categories, such as adult or offensive content, based on the child's age. You can decide to block additional categories or specific website addresses (URLs). Includes Safe Search that helps categorize results from search engines and blocks inappropriate content from search results.
Monitoring-only mode for websites <small>AVAILABLE IN PREMIUM</small>	Don't want to block content right away? Activate the monitoring mode and receive reports on the websites the child visits.
Reports <small>AVAILABLE IN PREMIUM</small>	Provide detailed summary of each of the children's device usage and online activities for the last 30 days.

Know what apps your kids use and when

Our app-usage features help you make decisions on how children spend time using an Android smartphone or tablet.

Application Guard	Automatically blocks inappropriate applications based on the Google Play content rating.
Time-based app control	Set maximum usage time for the given day, and prohibit access to Fun & Games category during specific hours – such as during sleep time or school time.
Monitoring-only mode for apps	Switch to monitoring-only mode for app categories and specific apps when you don't want to automatically block apps based on the ESET Parental Control for Android categories.

Child-friendly communication

Allows you to have an honest dialogue with the child and build trust in the process.

Child-centered interface and communication	Communication takes place via a specially-designed child-friendly interface, using a respectful tone and explaining what is happening and why. We believe in openness. The kid on whose device our product is installed always knows the scope of parental control activities in effect.
Unblock request	The child can send a request to allow access to specific apps or websites – directly from the blocking screen. The parent will receive the notification by email, through the app (in parental mode), or via my.eset.com.
Kids-facing side of the app	Upon clicking on the app's icon, the child will see the current status – how much time is left for playing games, as well as what's being currently monitored on their device.

Reach your kids any time

Get through to the kid on the device and take the guesswork out of the child's whereabouts.

Parental message <small>AVAILABLE IN PREMIUM</small>	Contact the children via an onscreen message sent to their mobile device. They must acknowledge that they've read and understood your message before they can continue to use the device.
Child locator <small>AVAILABLE IN PREMIUM</small>	Check the child's current location at any time via my.eset.com or Application in Parent mode. This feature displays the location of any and all of the kids' devices connected to the Internet.
Geofencing <small>AVAILABLE IN PREMIUM</small>	Allows parents to set up zones and sends alerts when the child oversteps them.

Easily manage Parental Control across Android devices

Do it all from one place – always know what's happening and interact with the child.

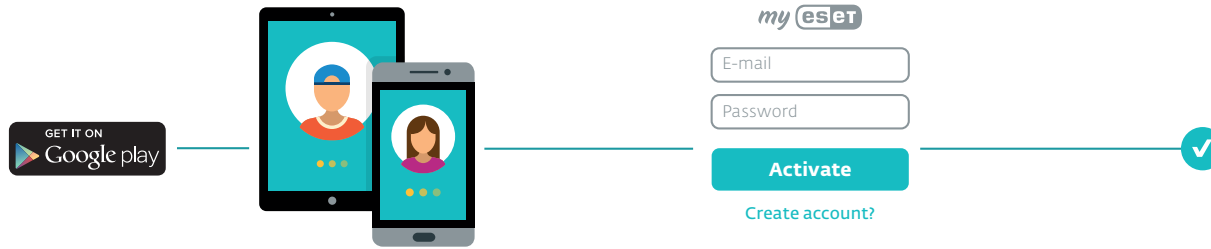
One family = One license	Each license is linked with my.eset.com account, with the same credentials used to activate the application on all children's and parent devices. In addition, the portal serves as a hub for managing the app and reports.
Synchronization with my.eset.com	See the summarized reports and the current status of all children's profiles and devices on my.eset.com.
The parent-facing side	Similar to my.eset.com, the Parent mode lets you manage directly from your smartphone all children's profiles across all their devices protected by ESET Parental Control for Android.



Copyright © 1992 – 2017 ESET, spol. s r. o. ESET, ESET logo, ESET android figure, NOD32, ESET Smart Security, SysInspector, ThreatSense, ThreatSense.Net, LiveGrid, LiveGrid logo and/or other mentioned products of ESET, spol. s r. o., are registered trademarks of ESET, spol. s r. o. Mac and the Mac logo are trademarks of Apple Inc., registered in the U.S. and other countries. Other here mentioned companies or products might be registered trademarks of their proprietors. Produced according to quality standards of ISO 9001:2008.

Quick Start

① Download & Activate

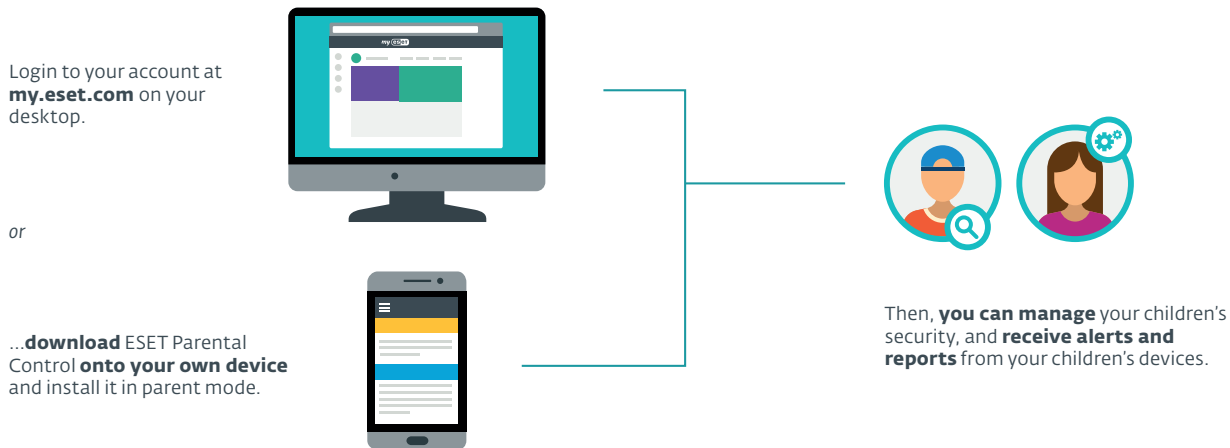


Download ESET Parental Control **onto your children's devices** from the Google Play store.

Activate the app using your **my.eset.com** login.

*Don't have one?
No problem – you'll be guided through the sign-up process.*

② Manage Your Kids' Security



Login to your account at **my.eset.com** on your desktop.

or

...**download** ESET Parental Control **onto your own device** and install it in parent mode.

Then, **you can manage** your children's security, and **receive alerts and reports** from your children's devices.