


SOLUTION OVERVIEW



CLOUD ADMINISTRATOR

Manage security for your network of up to
250 seats from a single cloud-based console

CYBERSECURITY
EXPERTS ON
YOUR SIDE

A close-up photograph of a person's hands clasped together over a laptop keyboard. The person is wearing a dark watch on their left wrist. The image is overlaid with a semi-transparent teal color. In the bottom right corner, there is a dark teal rectangular box containing white text.

With ESET Cloud Administrator, you can manage your company network security without the need to buy, install or maintain additional hardware. This solution is offered as a service to ESET business customers with up to 250 seats, reducing the total cost of ownership of the security solution and allowing you to concentrate on other important tasks. It is accessible anytime and anywhere via a web-based console. Setup of ESET Cloud Administrator and deployment of ESET security products is fast and easy, and gives you visibility of overall network security.

What's in it for you?

SOFTWARE AS A SERVICE

ESET Cloud Administrator is offered as a service that runs in the cloud. Managed via a remote web-console, it does not require dedicated hardware, or installation, configuration or maintenance. Setup, server cleanups, upgrades and certificates management are all done automatically in the background, without any need for user input. Users will always benefit from the latest features and improvements without any intervention required.

CREATE MANAGED NETWORK

Building a managed security network starts with connecting endpoints to a remote management console. In ESET Cloud Administrator, live installers are created that contain all important information, including the license key, and deployed to endpoints. After the successful installation of an ESET business product on an endpoint, the security product automatically reports to the console, thus establishing a monitored network.

GET VISIBILITY OF ENDPOINT STATUS

Endpoints continuously report to ESET Cloud Administrator whenever they connect to the internet. The status of the established network is displayed in interactive dashboards that translate data from endpoints to comprehensible charts and tables. Administrators can monitor the overall status in the main dashboard, or drill down to more specific categories to oversee the status of computers, threats or quarantined items.

EXECUTE AND AUTOMATE

Administrators can remotely configure security products on connected endpoints and execute tasks on machines immediately. They can also create policies scheduled to be applied upon specified triggers or as soon as the endpoints connect to the console. The tasks and policies can be applied to specific computers or to static or dynamic groups.

RECEIVE REAL-TIME ALERTS

A great advantage of a managed security network is the possibility to receive immediate warnings even when the administrator is off duty. He or she can set notifications to various events and to various recipients to respond to threats attacking endpoints connected to the network as soon as possible. The admin can also create multiple reports that can visualize the network status and can be printed or shared in digital form.



ESET Cloud Administrator
supports the newest versions
of the following ESET security
products

ESET Endpoint Antivirus
for Windows and OS X/macOS

ESET Endpoint Security
for Windows and OS X/macOS

ESET File Security
for Microsoft Windows Server

ESET File Security for Linux

ESET Mail Security
for Microsoft Exchange Server

ESET Mail Security
for IBM Domino

ESET Security
for Microsoft SharePoint Server

What's inside?

WEB-CONSOLE

The data stored in ESET Cloud Administrator is viewed on a web-console accessible via a public internet connection. This serves as a single pane of glass that visualizes data into dashboards and lists, and commands agents to behave according to the administrator's needs. It enables the management and organization of a network of managed devices into static and pre-defined dynamic groups.

LIVE INSTALLER

A small, easily downloadable, pre-configured package, contains all the necessary components – the management agent and the ESET endpoint security product. It installs the security product on the endpoint, automatically connects to the proper cloud instance and activates itself with a valid license. The live installer can be downloaded directly to the endpoint, or a link to the live installer can be sent via email or any other communication tool.

SECURITY PRODUCTS

ESET security products protect client computers and servers against threats. ESET Cloud Administrator supports the newest versions of the following ESET security products: ESET Endpoint Antivirus for Windows and OS X/macOS, ESET Endpoint Security for Windows and OS X/macOS, ESET File Security for Microsoft Windows Server, ESET File Security for Linux, ESET Mail Security for Microsoft Exchange Server, ESET Mail Security for IBM Domino, ESET Security for Microsoft SharePoint Server. In addition to the latest available version, users can choose the version prior to the current one.

REMOTE DEPLOYMENT TOOL

This is a tool that can remotely deploy ESET Cloud Administrator live installer to the network. It has the capability to map the network remotely, sync with Active Directory, or support importing of the targets on which the product will be deployed.

FULL DISK ENCRYPTION

ESET Full Disk Encryption is a feature native to ESET remote management consoles – ESET Cloud Administrator, and ESET Security Management Center. It allows 1-click deployment and encryption of data on connected endpoints. ESET Full Disk Encryption greatly increases your organization's data security and helps you comply with data protection regulations.

ESET BUSINESS ACCOUNT

ESET Business Account is a licensing management platform for business customers that lets you manage licenses. It is the primary entry point for ESET cloud services, including ESET Cloud Administrator.

It allows users to:

- ✓ Manage licenses easily
- ✓ Create company users and define their access level to the Business Account
- ✓ Generate a 30-day trial license for managing the products, including ESET Full Disk Encryption, via ESET Cloud Administrator or on-premise via ESET Security Management Center
- ✓ Activate ESET Cloud Administrator to manage your company network security

What makes it so good?

EASY SETUP

After activation of ESET Cloud Administrator, basic functions are introduced via an "onboarding wizard" that shows the administrator how to add computers, deploy the security product and create a protected network. After successful deployment, the device becomes instantly visible in ESET Cloud Administrator.

ONE-CLICK ACTIONS

ESET Cloud Administrator allows several one-click actions for easier product management. Administrators can use one-click actions to quickly upgrade security products across the entire security network to the latest versions, navigate to threats or resolve different issues such as activation, computer reboot, and OS update.

STATIC AND DYNAMIC GROUPS

Each device is located in a single static group that can be created according to user needs. Static groups can be nested in a tree structure. Dynamic groups show devices based on pre-defined criteria and are essential for automation, in which policies are applied and tasks are executed only when the device matches the inclusion criteria.

MANAGEMENT OF USERS

Devices in a secured network can be assigned to specific users. This feature gives the administrator the option to filter computers based on users, see their details and check the devices that they use.

NOTIFICATIONS

Administrators need to be informed immediately of issues within the security networks they maintain to be able to trigger the proper actions when needed. ESET Cloud Administrator allows admins to use a set of predefined notifications that are sent to specified email addresses immediately and shown in the dashboard.

POLICIES, REPORTS AND TASKS

ESET Cloud Administrator comes with a pre-created set of policies for the administrator's convenience. These can be assigned to groups or individual computers. The administrator can view reports that are divided into categories and accessed with a single click. All commands which will be executed on a managed computer are sent via a client task, which can be created from the context menus, tool bars and dedicated "Tasks" section, then scheduled and executed according to a defined trigger.

INCIDENT OVERVIEW DASHBOARD

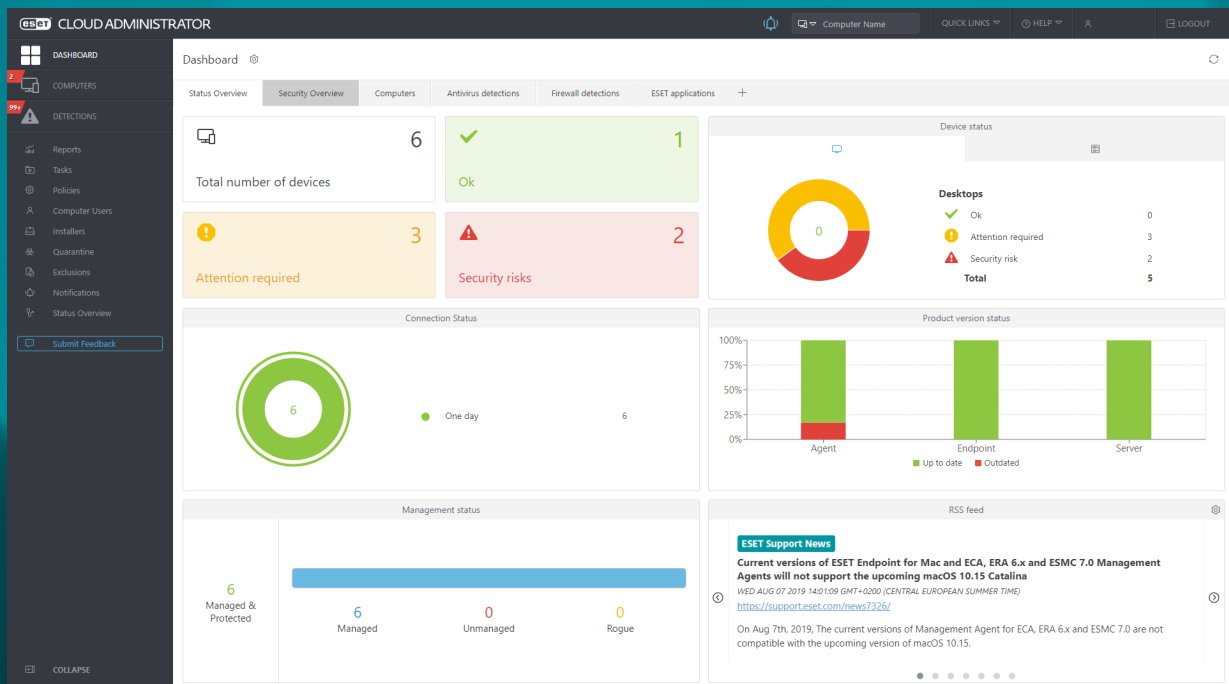
The security-centric dashboard displays the recent status of the security in the network. It shows an incident timeline, groups, detections by computers, and can display the top 10 computers and users that have had security incidents reported.

HARDWARE INVENTORY

ESET Cloud Administrator collects and displays data about hardware installed on endpoints connected in the security network. With the possibility to display data about CPU, RAM, monitors, disk drives, input devices, and printers, including vendor, model, and serial number, it can serve as an overview of the company inventory.

CLIENT DETAILS

This displays comprehensive information about the client: to which dynamic groups it belongs, which security products are installed, its hardware and operating system and who is the user. The information is shown on interactive tiles by category, highlighting unresolved issues.



ESET Cloud Administrator dashboard view

Test our cloud-based remote management. Experience the reliability, convenience and easy management of ESET best-in-class endpoint protection. Register your company with **ESET Business Account** then claim your free trial licence for up to 25 seats including ESET Full Disk Encryption.



ENJOY SAFER TECHNOLOGY™



ESET Cloud Administrator
was awarded APPROVED status
in the AV-Comparatives Business
IT Security Test 2019



ESET Cloud Administrator and
ESET Business Account meet the requirements
for ISO/IEC 27001:2013 Information Security
Management Standards (ISMS).

ESET IN NUMBERS

110m+
users
worldwide

400k+
business
customers

200+
countries &
territories

13
global R&D
centers

For more than 30 years, ESET® has been developing industry-leading IT security software and services, delivering instant, comprehensive protection against evolving cybersecurity threats for businesses and consumers worldwide. ESET is privately owned. With no debts and no loans, we have the freedom to do what needs to be done for the ultimate protection of all our customers.

www.eset.com